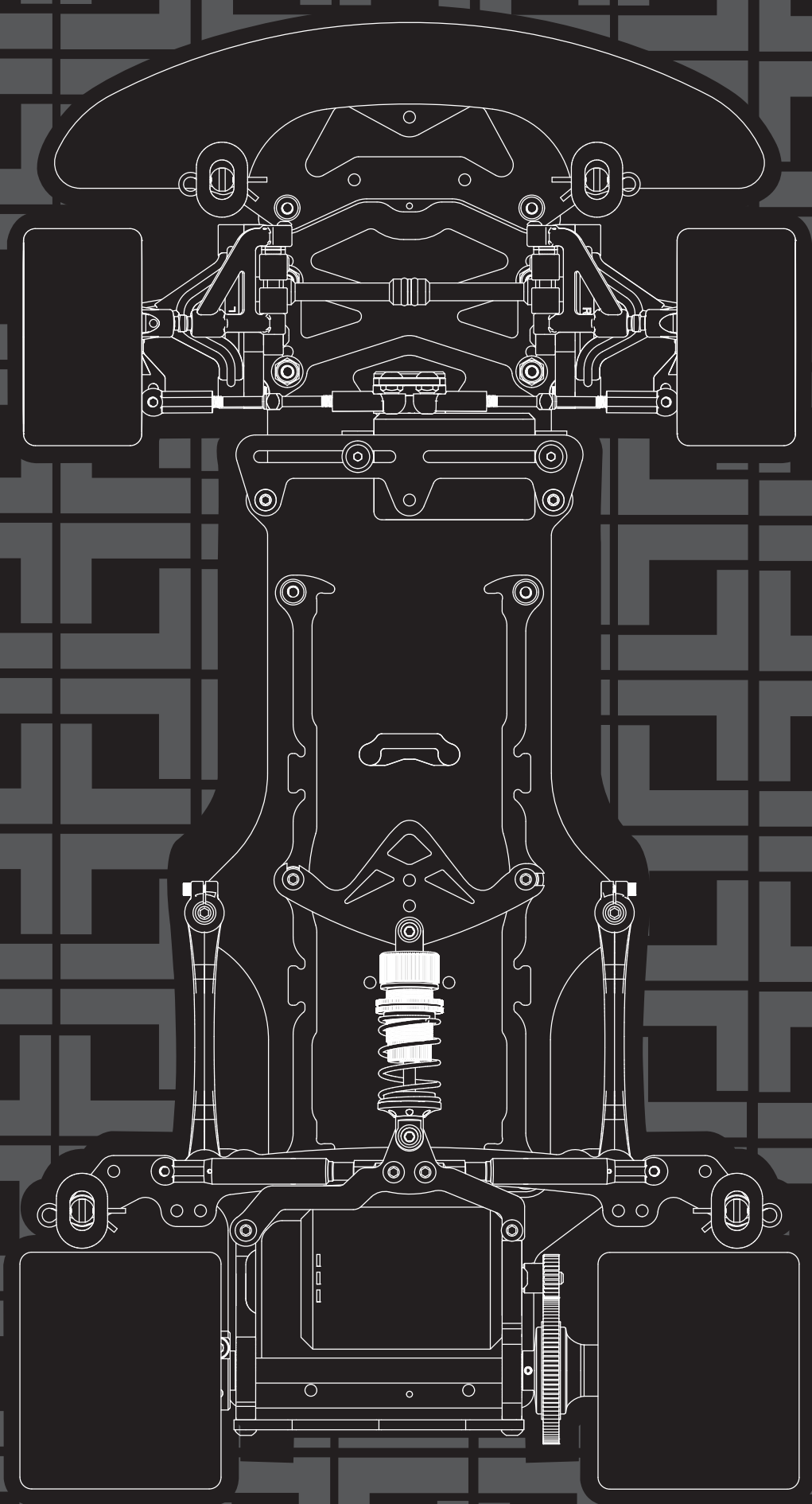


# TEENESMOXO

GT-500W-V2



Thank you for purchasing this TEAMSAXO product. This high performance competition kit has been proudly manufactured by TEAMSAXO World Champion R/C car manufacturer.  
Proper assembly of this product will provide fun,safe enjoyment.

## PRECAUTIONS FOR SAFE ENJOYMENT OF YOUR R/C CAR

For children under the age of 13, parental guidance is recommended when running.

### ASSEMBLY PRECAUTIONS

Do not assemble around small children. The parts can be dangerous if accidentally swallowed.

Check the contents carefully before assembly. Please contact Customer Support if you happen to notice any defective or missing items.

You will find the assembly process much easier by carefully reading through the manual, and familiarizing yourself with the instructions.

Many different tools are required during assembly. For safety purposes, please use suitable tools. Exercise extra caution when using a sharp tool such as a hobby knife.

Many different materials are used for the parts. Use extra care when handling parts with sharp edges, such as machined metal parts.

When cutting plastic parts, watch for any flying parts.

Try to assemble any rotating parts of drivetrain parts as smooth as possible.

Bundle wires neatly away from the ground or any moving drivetrain components. Make sure that all wires are properly connected to prevent shorting.

Unnecessary modifications may be unsafe and hinder performance.

Always paint in a well ventilated area away from flames.

### PRECAUTIONS BEFORE RUNNING

Teamsaxo R/C cars are built for competition use, and some models may exceed speeds of 40km per hour. Practice common sense and run the car in open safe places, or R/C car tracks.

Do not run the car on public roads with high amounts of traffic, or in areas that may cause an inconvenience to people in that area.

R/C cars are controlled using radio frequency. In a worst-case scenario, radio interferences may cause loss of control.

If others near you are running R/C cars, confirm that they are not running on the same frequency.

R/C cars do not like water. Avoid running on rainy days, or areas with water puddles. Exposure of the electronics to water may cause loss of control or damage to the electronics.

The drivetrain of an R/C car consists of many moving parts like gears, belts, shafts, and tires. Avoid touching these areas when the battery is connected.

Many parts of an R/C car will become hot after running. Allow the parts to sufficiently cool before conducting any maintenance.

### BEGINNING A RUN

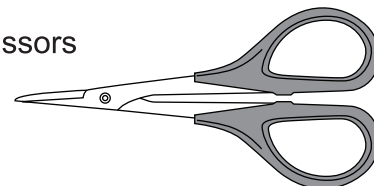
1. Place the R/C car on a stand so the wheels are off the ground.
2. Confirm that the speed controller switch is OFF, and connect the motor and battery.
3. Extend the transmitter antenna and turn the switch ON. (It is unsafe to use a transmitter with low voltage. Make sure that the transmitter batteries are good before running.)
4. Turn the speed controller switch ON.

### FINISHING A RUN

1. Turn the speed controller switch OFF.
2. Disconnect the battery.
3. Turn the transmitter switch OFF, and retract the antenna.

## ASSEMBLING TOOLS REQUIRED (NOT INCLUDED IN KIT)

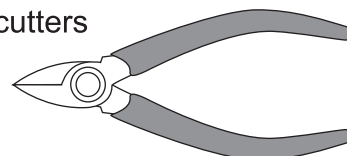
Scissors



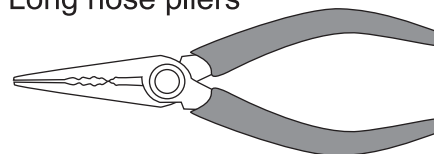
Modeling knife



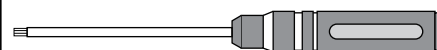
Side cutters



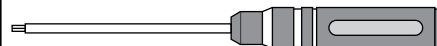
Long nose pliers



Hex wrench (1.5mm)



Hex wrench (2mm)



Tweezers



## GT-500W-V2 CHASSIS SPECIFICATION

Overall Length	:320mm	Overall Width	Front width :195mm
Wheelbase length	:257-262mm		Rear width :198mm
Weight Chassis only	:365g		

### Cap

	M3×4	SJG304
	M3×6	SJG306
	M3×8	SJG308
	M3×10	SJG310

### Cap screw

	M2×6	SG206
	M3×8	SG308
	M3×12	SG312

### E-Ring

	E-Ring 2.0	OE-E2.0
--	------------	---------

### Screw

	M2.5×4	SIG2.54
	M3×4	SIG304
	M3×6	SIG306
	M3×8	SIG308
	M3×10	SIG310

### Grub screw

	M3×3	SK303
	M3×8	SK308
	M3×10	SK310

### Lock nut

	M4	SN-M4-F
	M3	SN-M3-F
	M3	SN-M3

### Ball bearing

	6.35×9.525×3.175	FR168ZZ
	6.35×9.525×3.175	R168-2RS
	3×8×3.5	F3-8M





① ~ ②  
Kit Bag A

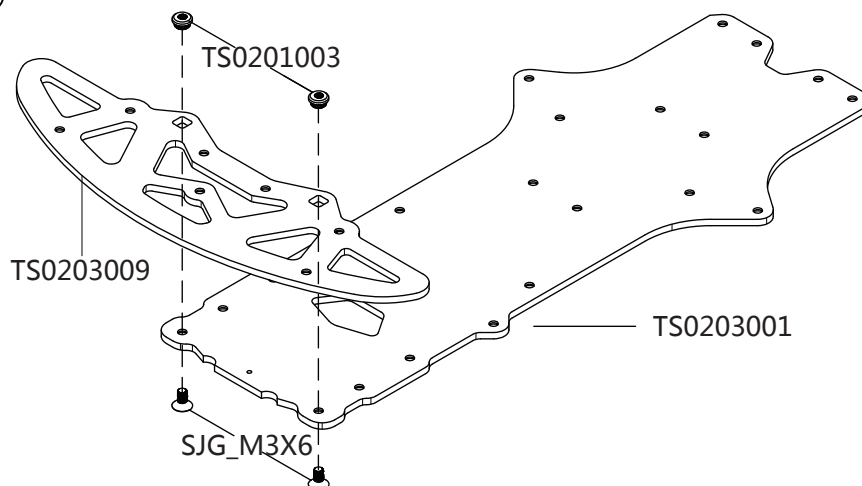


TS0201003 .....2



SJG\_M3X6 .....2

① Lower deck

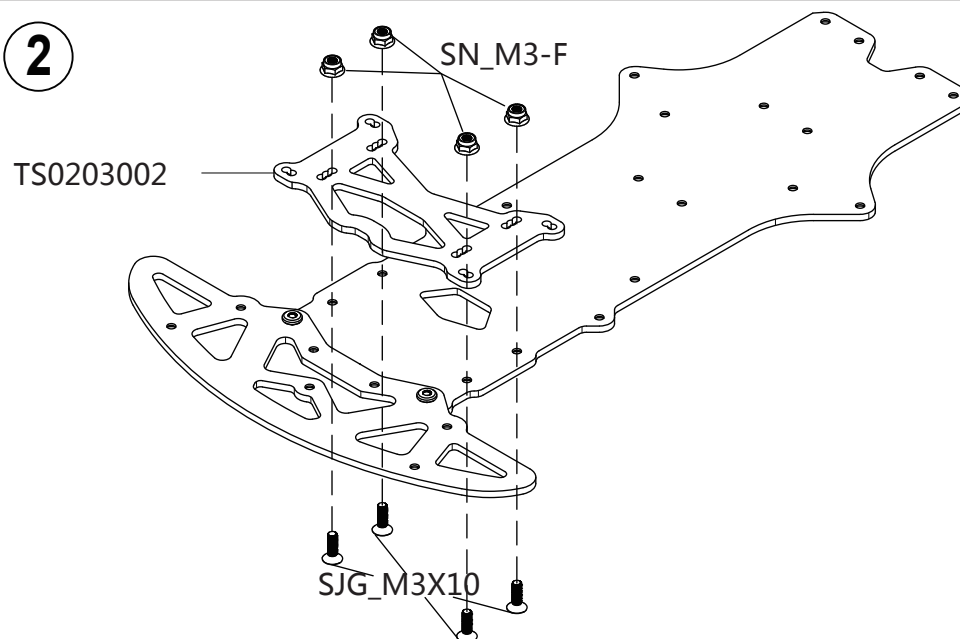


SN\_M3-F .....4

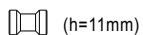


SJG\_M3X10 .....4

②



③ ~ ④  
Kit Bag B



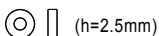
TS0201006 .....2



TS0201005 .....2



TS0201003 .....2



TS0201003 .....2

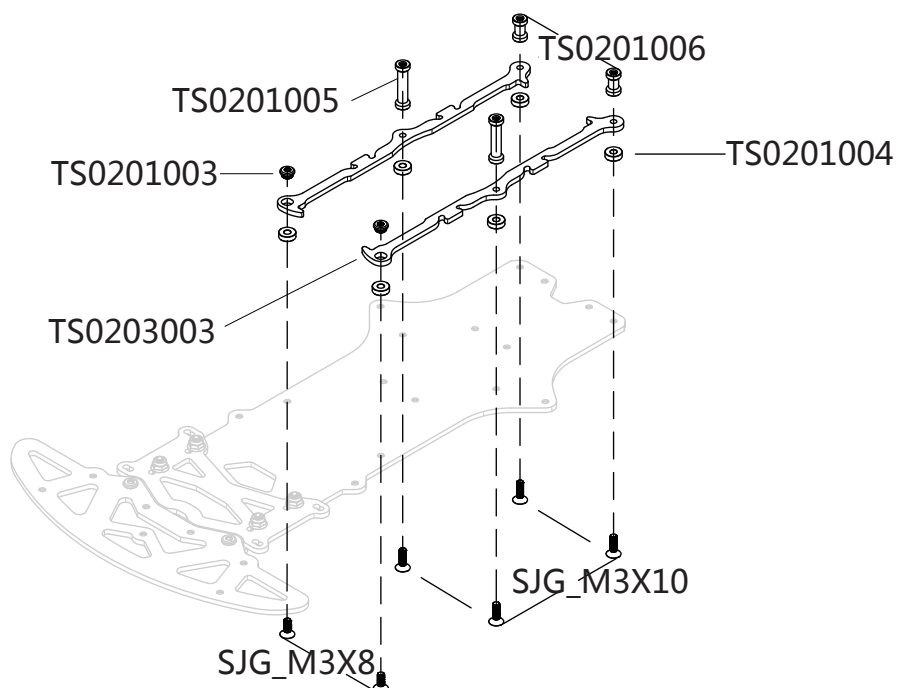


SJG\_M3X8 .....2



SJG\_M3X10 .....4

③



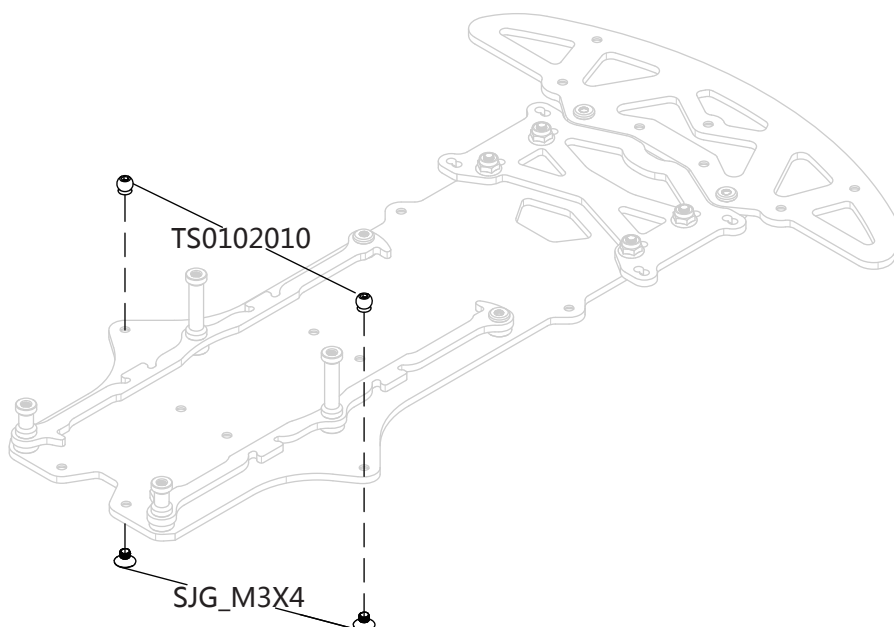


TS0102010 .....2



SJG\_M3X4 .....2

4



5 ~ 7  
Kit Bag C



TS0102010 .....3



SJG\_M3X4 .....2



SJG\_M3X6 .....1



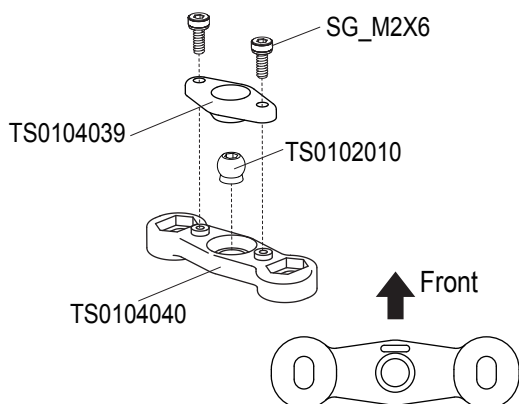
SG\_M2X6 .....2

5

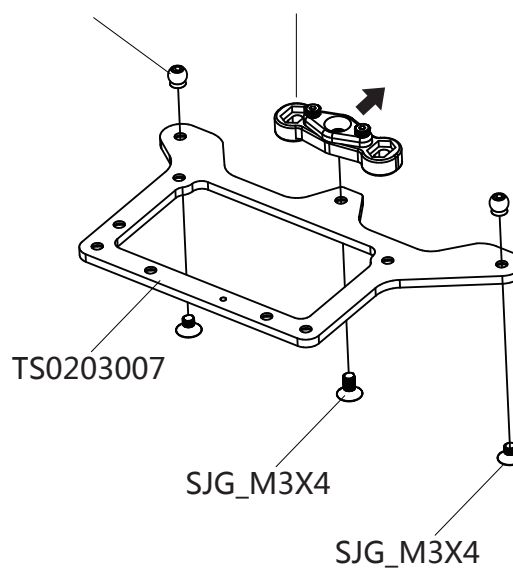
Lower brace

★ Do not over tighten.

Hex wrench  
(1.5mm)



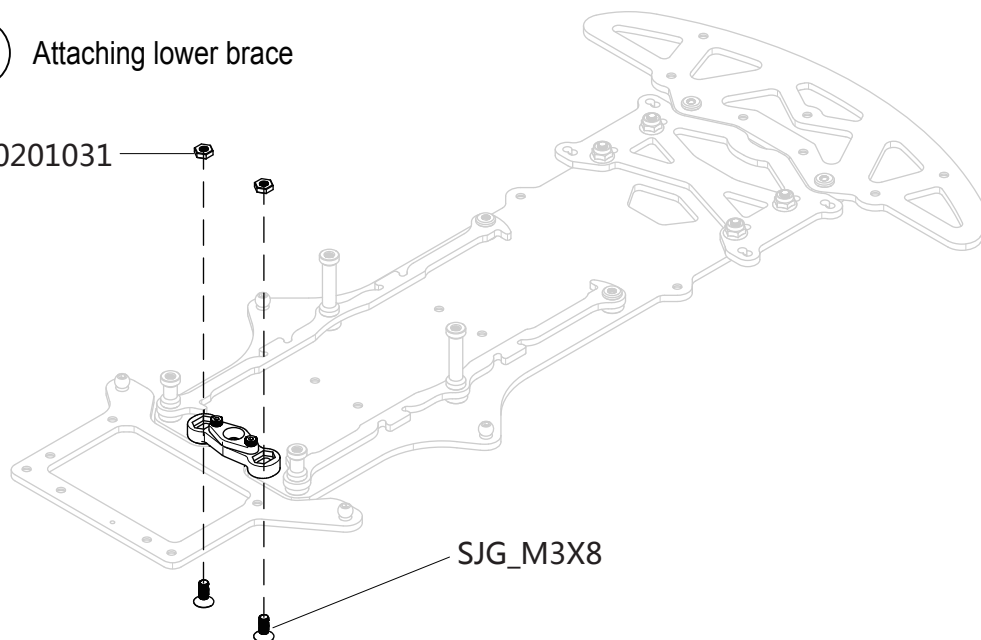
TS0102010 ★ Note direction



6

Attaching lower brace

TS0201031



TS0201031 .....2



SJG\_M3X8 .....2

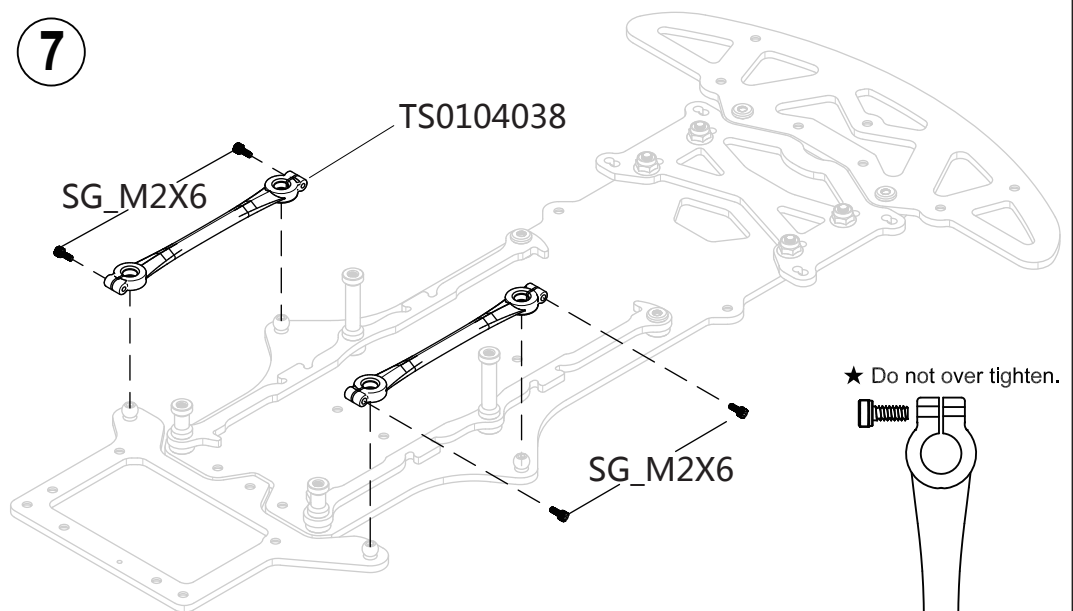


TS0104038 .....2

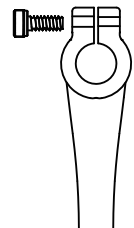


SG\_M2X6 .....4

7



★ Do not over tighten.



★ Note direction



8

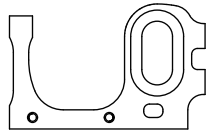
Kit Bag D

8

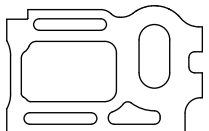
Motor mount

TS0101021

★ Assemble on a flat surface to prevent distortion



TS0101021.....1



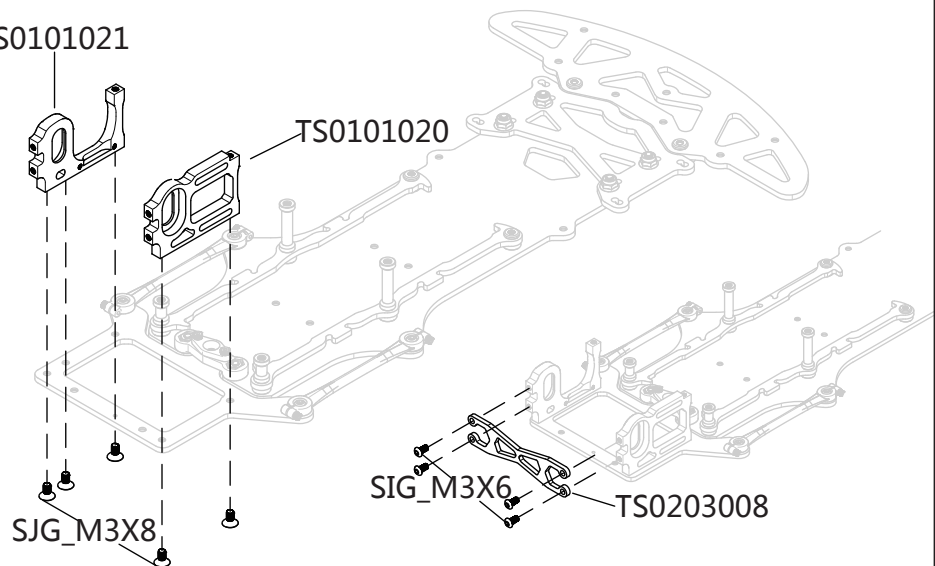
TS0101020.....1



SIG\_M3X6.....4



SJG\_M3X8.....5



9

Kit Bag E

9



SG\_M3X12.....2

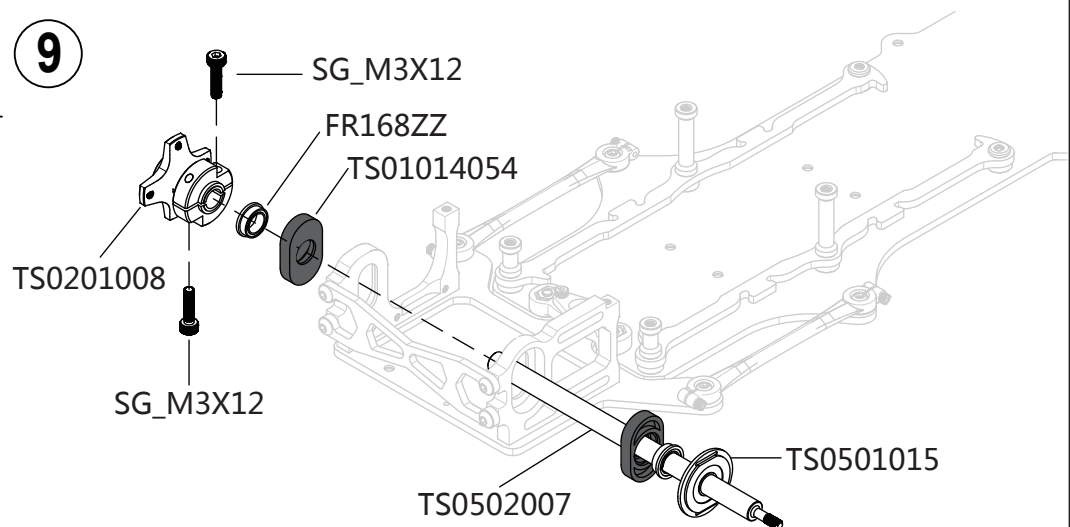


6.35X9.525X3.175

FR168ZZ .....2



TS0201008.....1



★ Refer to page 16 for ground clearance adjustment



TS0501021.....1



( $\varnothing 6.35 \times \varnothing 9.525 \times 3.175$ )  
R168-2RS .....1



( $\varnothing 6.35 \times \varnothing 9.525 \times 3.175$ )  
FR168ZZ .....2



F3-8M .....2



TS0102034 .....2



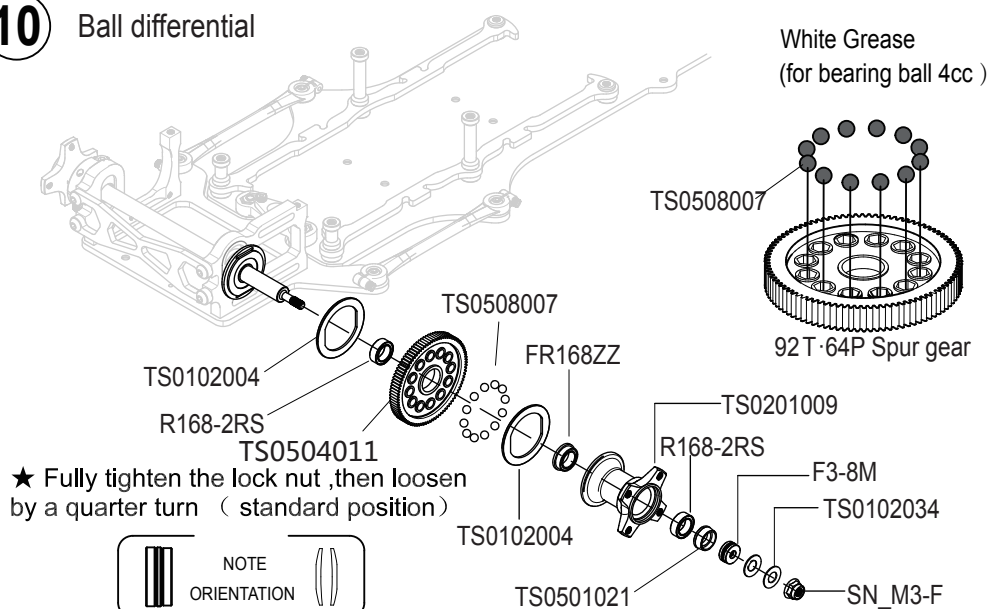
TS0508007.....12



SN\_M3-F .....1

**10**

## Ball differential



(11) ~ (16)

## Kit Bag F



TS0104042 .....2



TS0102001 .....2



TS0101007 .....2



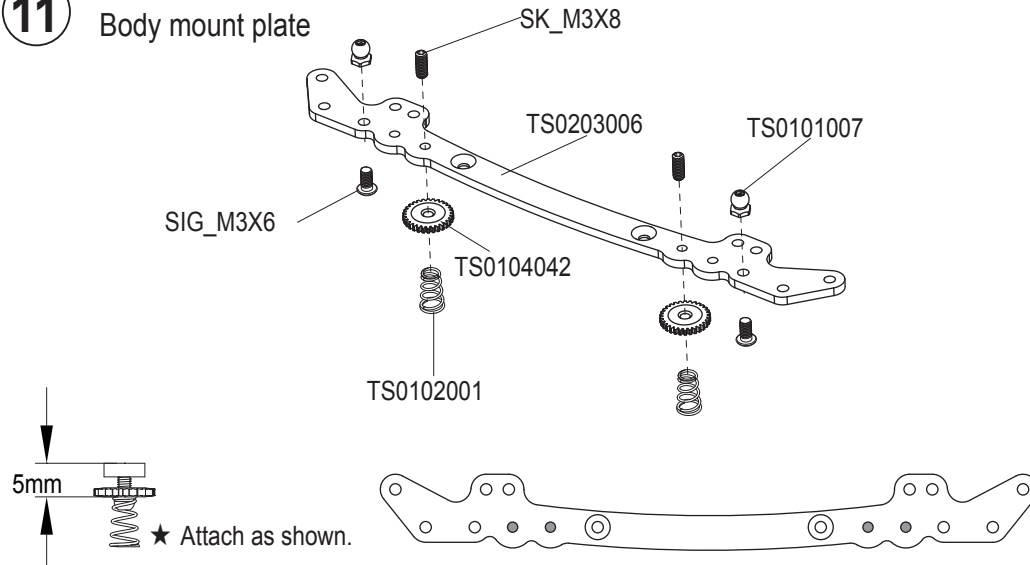
SIG\_M3X6 .....2



SK\_M3X8 .....2

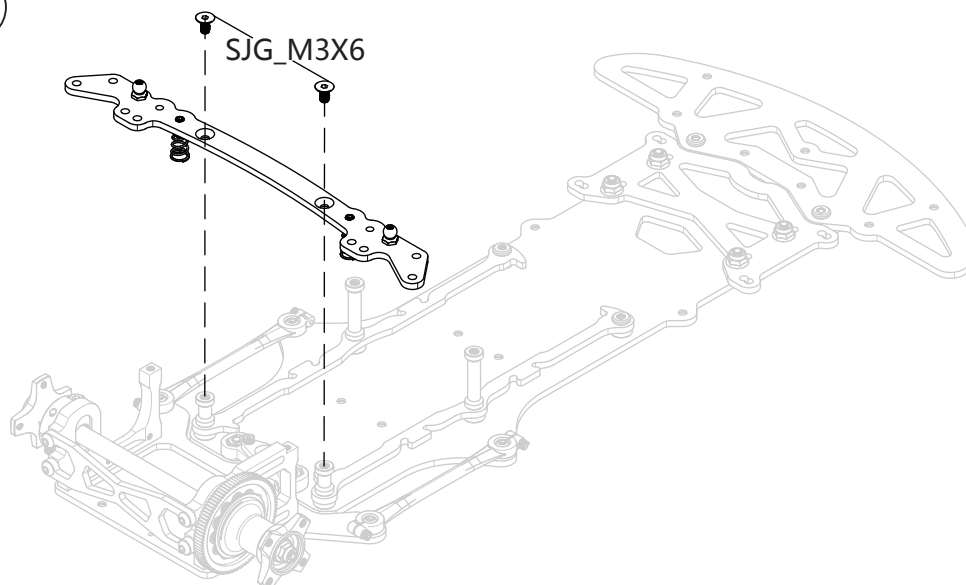
**11**

## Body mount plate



SJG\_M3X6.....2

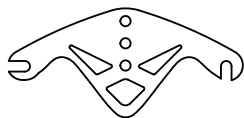
**12**



<div data-bbox="129 103 164 140" data-label="Image"></div> <div data-bbox="129 146 371 178" data-label="Text"> TS0101007 .....3 </div> <div data-bbox="129 211 209 243" data-label="Image"></div> <div data-bbox="129 247 371 280" data-label="Text"> TS0101029 .....1 </div> <div data-bbox="129 308 188 340" data-label="Image"></div> <div data-bbox="129 347 371 379" data-label="Text"> SIG_M3X6 .....2 </div> <div data-bbox="129 416 204 448" data-label="Image"></div> <div data-bbox="129 454 371 487" data-label="Text"> SJG_M3X10 .....1 </div>	<div data-bbox="443 92 507 157" data-label="Text"> 13 </div> <div data-bbox="518 97 1284 711" data-label="Image"></div>
<div data-bbox="129 761 204 804" data-label="Image"></div> <div data-bbox="129 810 371 842" data-label="Text"> TS0104026 .....4 </div> <div data-bbox="129 890 311 933" data-label="Image"></div> <div data-bbox="129 940 371 972" data-label="Text"> TS0101018 .....2 </div> <div data-bbox="129 1009 279 1052" data-label="Image"></div> <div data-bbox="129 1058 371 1090" data-label="Text"> TS0104080 .....2 </div> <div data-bbox="129 1149 183 1181" data-label="Image"></div> <div data-bbox="129 1187 371 1220" data-label="Text"> SK_M3X10.....2 </div>	<div data-bbox="443 750 507 814" data-label="Text"> 14 </div> <div data-bbox="805 743 1252 808" data-label="Text"> ★Apply different viscosities of grease to the piston to adjust roll damper hardness. </div> <div data-bbox="454 743 1492 1369" data-label="Image"></div>
<div data-bbox="129 1418 172 1450" data-label="Image"></div> <div data-bbox="129 1457 371 1489" data-label="Text"> SIG_M3X6 .....2 </div>	<div data-bbox="443 1418 507 1483" data-label="Text"> 15 </div> <div data-bbox="454 1412 1492 2015" data-label="Image"></div>



TS0101007.....1



TS0203004.....1



SJG\_M3X6.....1



SIG\_M3X6.....2

**16**

TS0101007

TS0203004

SIG\_M3X6

SJG\_M3X6



**17 ~ 25**  
Kit Bag G



TS0101007.....2



TS0101029.....2



TS0104023.....2



SIG\_M3X10.....2

**17**

Attaching front uprights

TS0101007

TS0101029

TS0104023

SIG\_M3X10

TS0101007

TS0101029

TS0104023

SIG\_M3X10



TS0202001.....2



SIG\_M2\_5X4.....2

**18**

GT-500W-V2 offset upright assembly


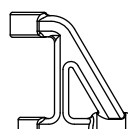


TS0202001

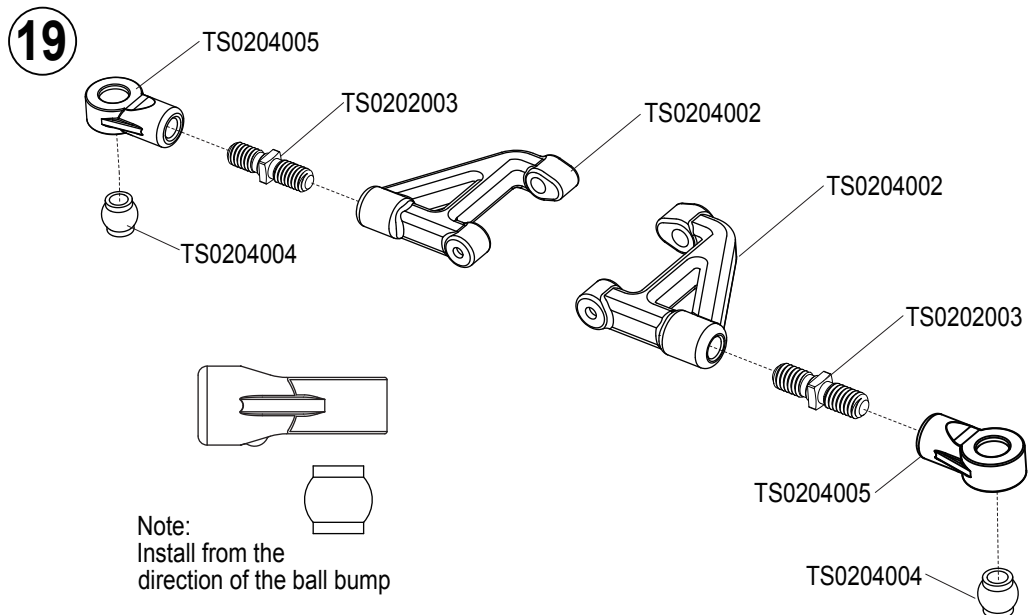
SIG\_M2\_5X4

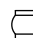




SIG\_M2\_5X4

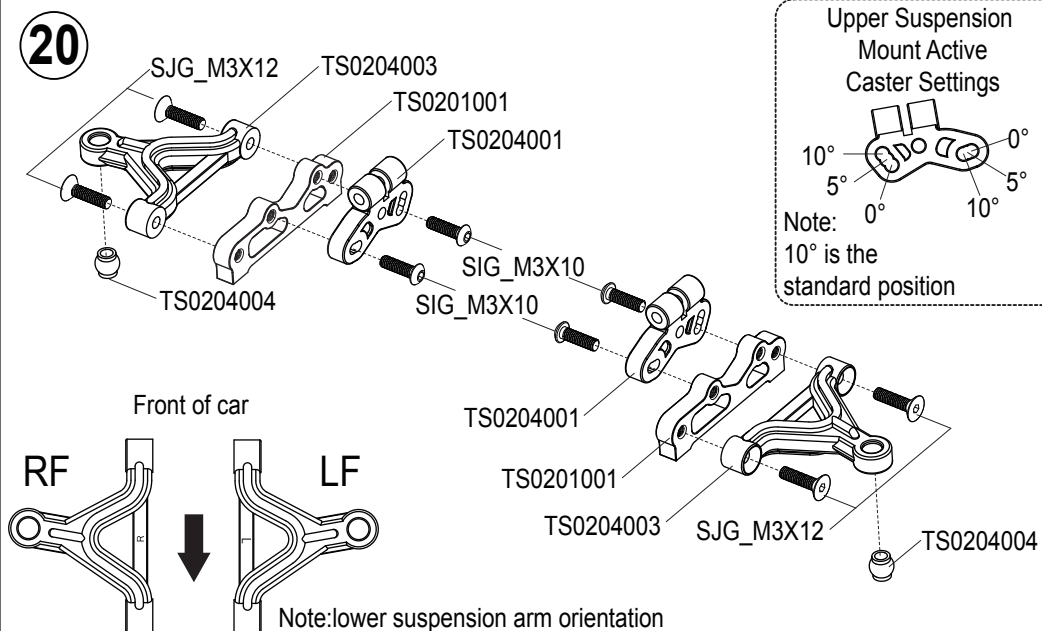
TS0202001

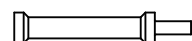
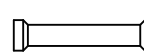



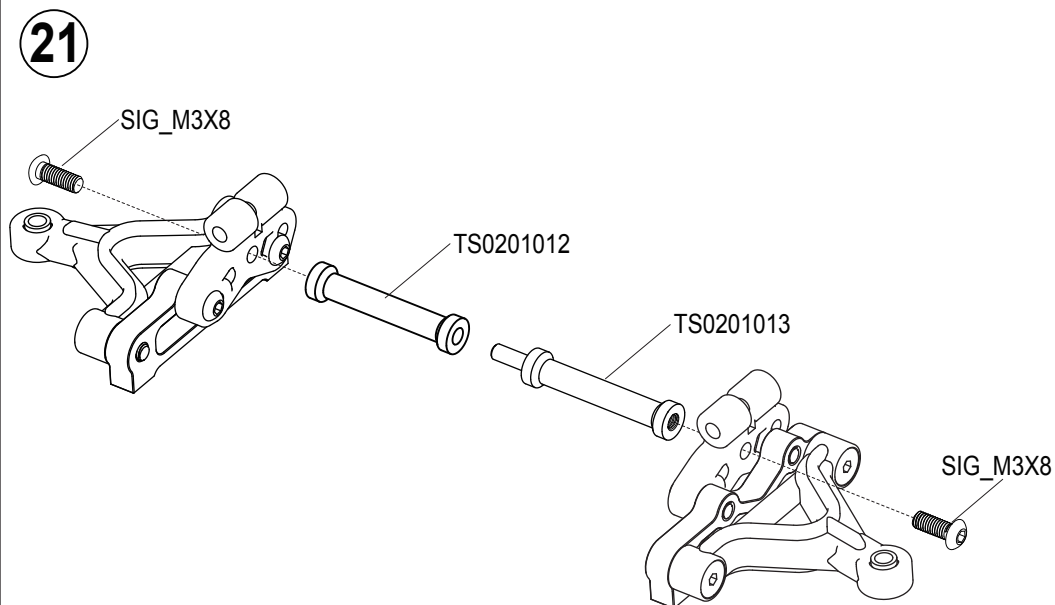
-  TS0204004 .....2  
 TS0204002 .....2  
 TS0202003 .....2  
 TS0204005 .....2





-  TS0204004 .....2  
 TS0201001 .....2  
 TS0204001 .....2  
 SJG\_M3X12 .....4  
 SIG\_M3X10 .....4




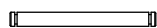
-  TS0201012 .....1  
 TS0201013 .....1  
 SIG\_M3X8 .....2



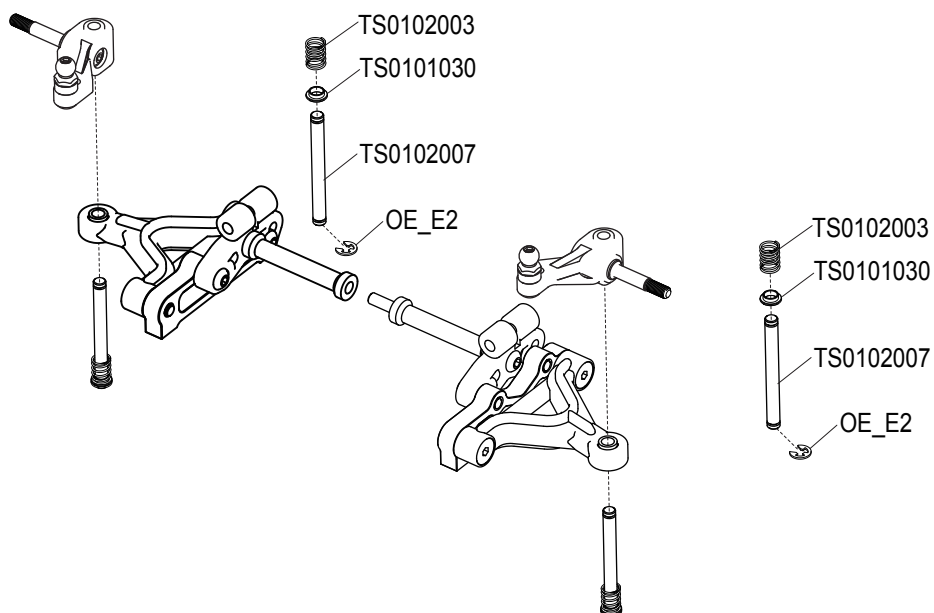
 OE\_E2 .....2

 TS0101030 .....2

 TS0102003 .....2

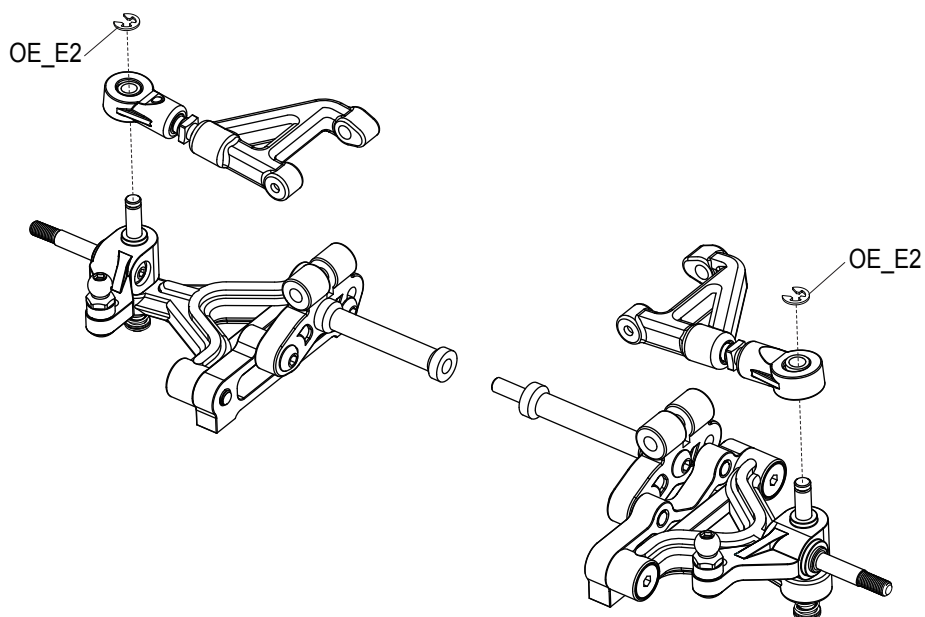
 TS0102007 .....2


**22**





 OE\_E2 .....2

**23**




 SIG\_M2X4 .....2

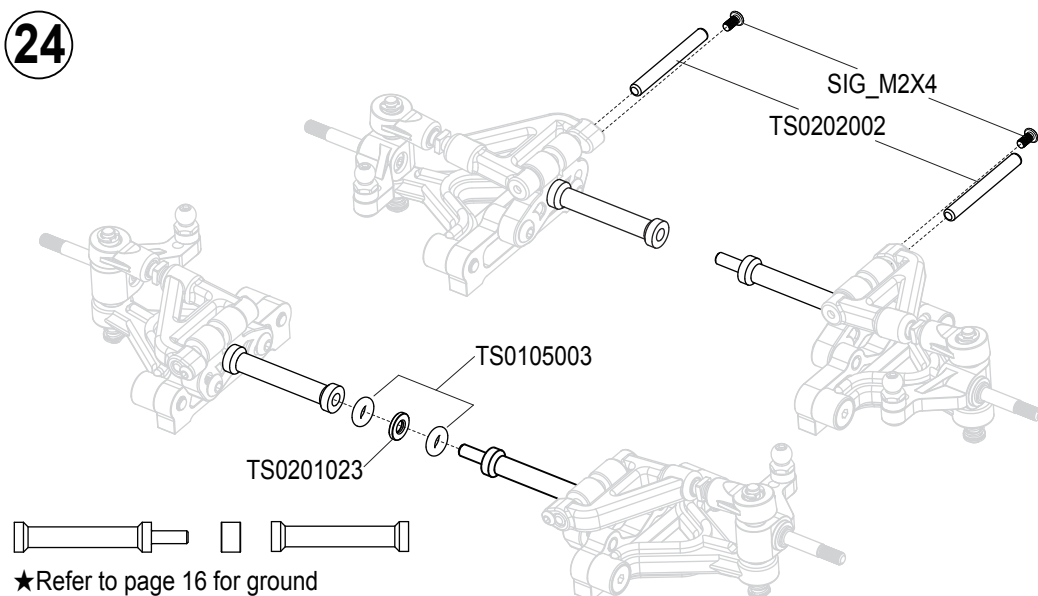
 TS0202002 .....2

 TS0201024 .....1

 TS0201023 .....1

 TS0105003 .....2






**24**



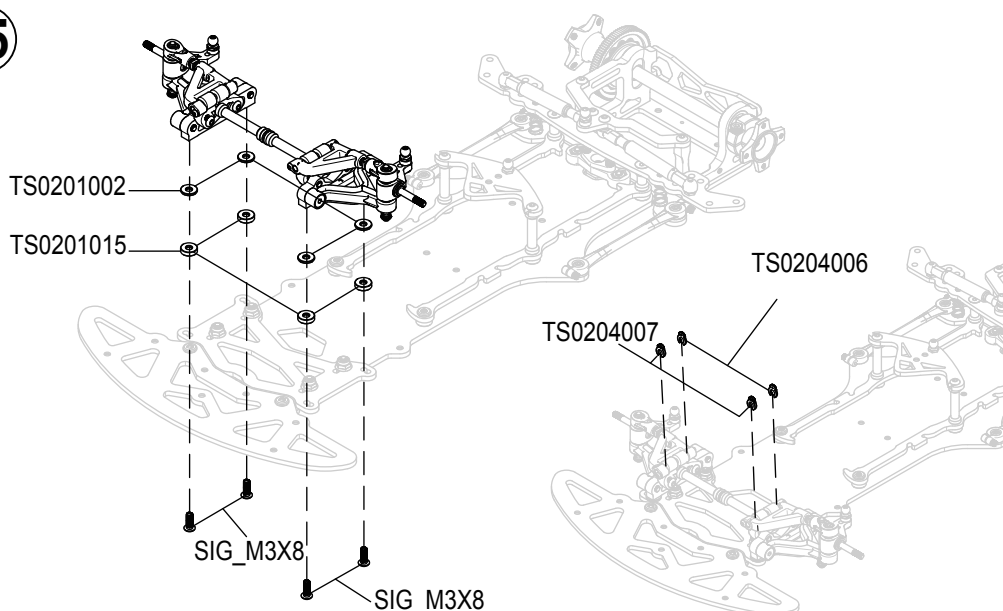
★Refer to page 16 for ground clearance adjustment.


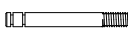



(26) ~ (32)  
Kit Bag H

-  TS0201002 .....4
-  TS0201015 .....4
-  SIG\_M3X8 .....4
-  TS0204006 .....2
-  TS0204007 .....2

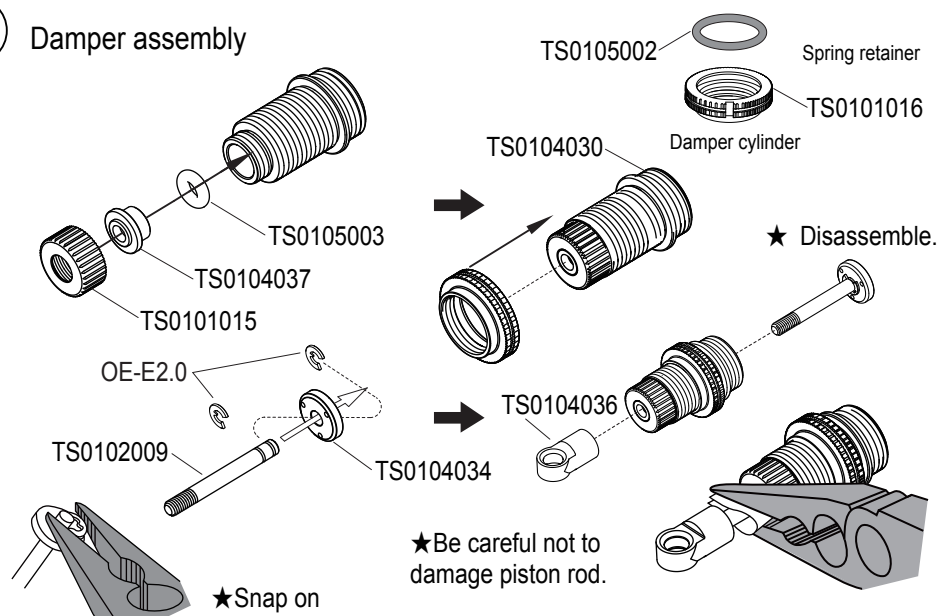
(25)

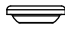


-  TS0105003 .....1
-  TS0104034 .....1
-  TS0104037 .....1
-  TS0102009 .....1
-  OE\_E2 .....2
-  TS0105002 .....1

(26)

### Damper assembly



-  TS0105001 .....1

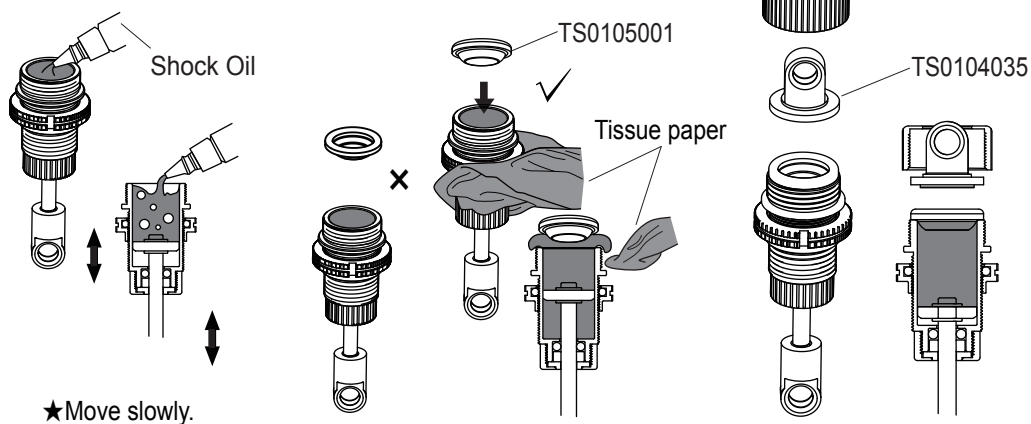
(27)

### Damper oil

1. Pull down piston and pour oil into cylinder. Remove air bubbles by slowly moving piston up and down.

2. Pull down piston, attach oil seal and absorb oil overflow with tissue paper.

3. Tighten cylinder cap.

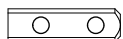
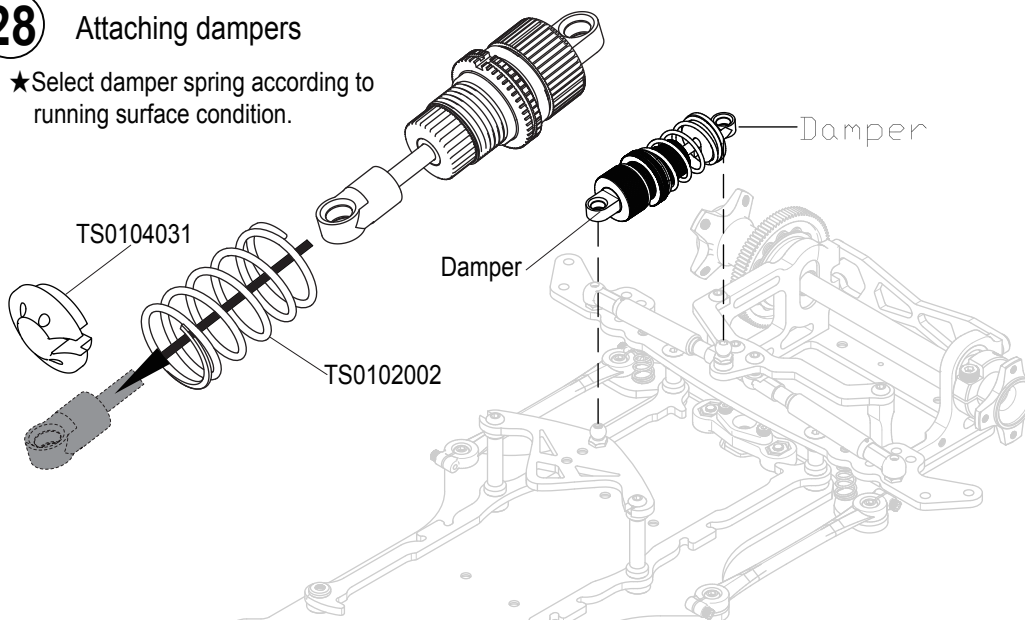




TS0102002 .....1

## 28 Attaching dampers

★Select damper spring according to running surface condition.



TS0201041.....2



TS0102017.....1



TS0102016 .....2



TS0104084.....2



SIG\_M3X10.....1

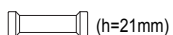
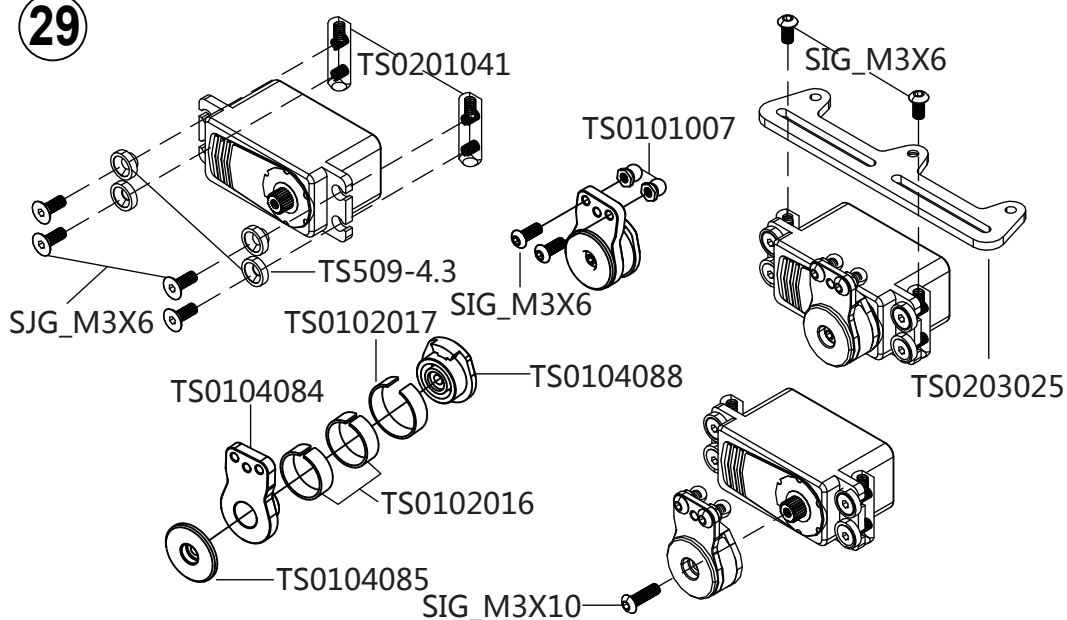


SIG\_M3X6 .....4



SJG\_M3X6 .....4

## 29



TS0101053.....2

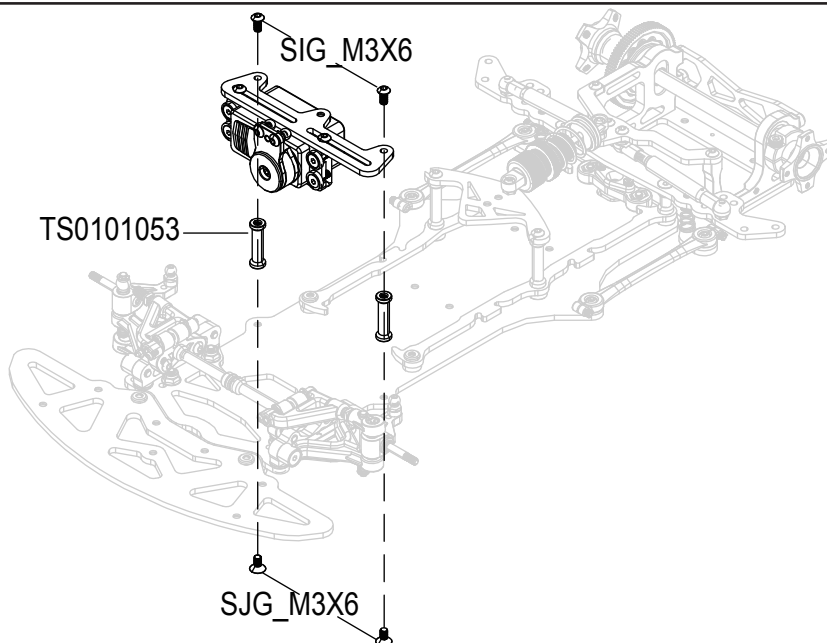


SJG\_M3X6 .....2



SIG\_M3X6 .....2

## 30



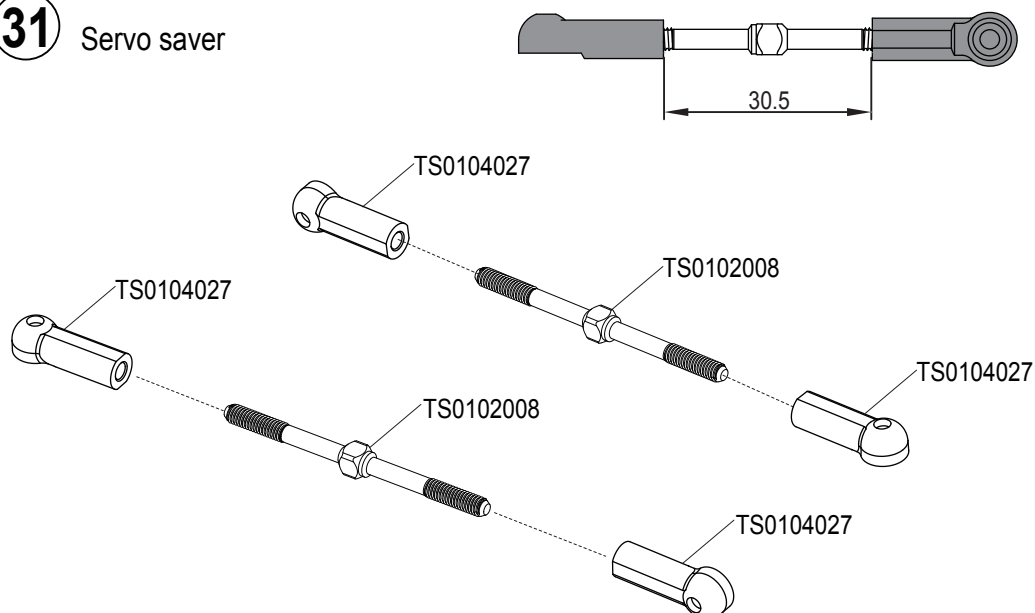


TS0102008 .....2

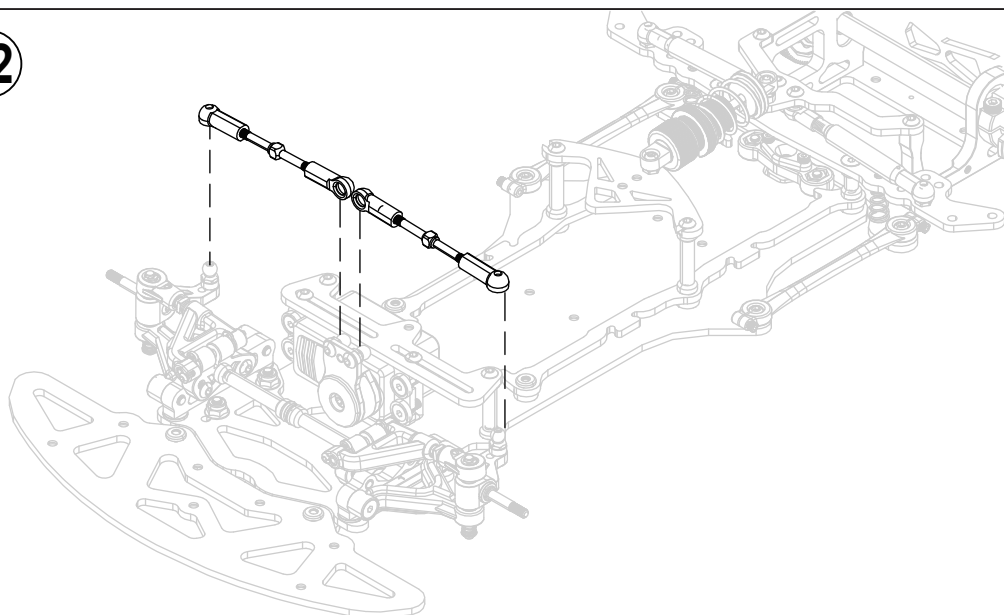


TS0104027 .....4

### 31 Servo saver



### 32



33 ~ 42  
Kit Bag I

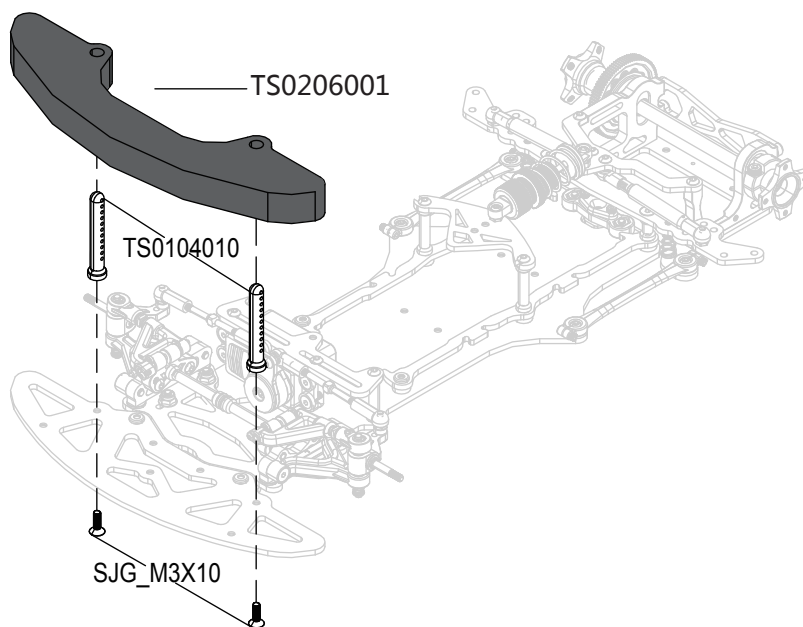


TS0104010 .....2



SJG\_M3X10 .....2

### 33



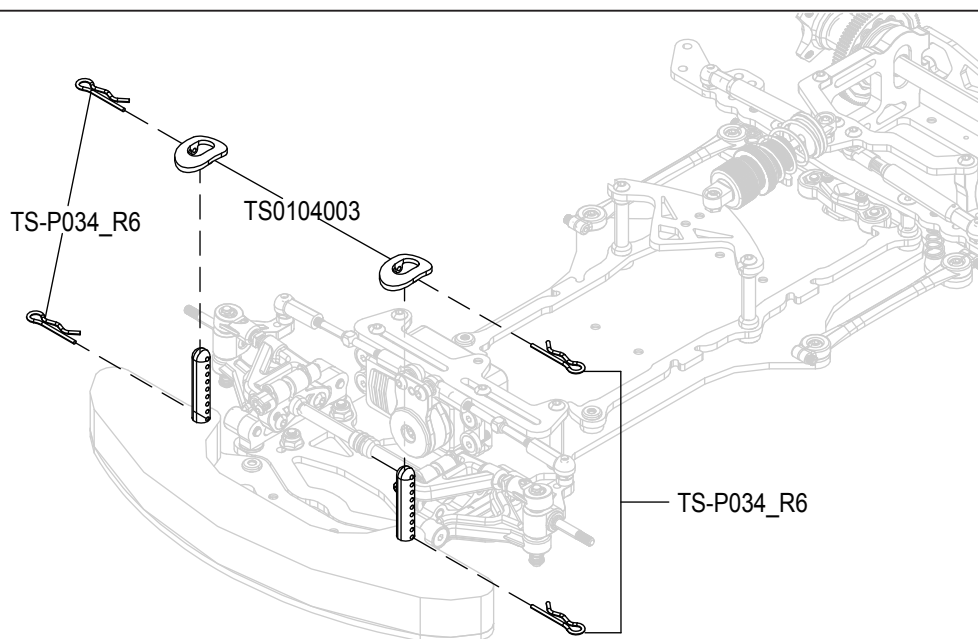


TS-P034\_R6 .....4



TS0104003 .....2

**34**



TS-P034\_R6 .....2



TS0104003 .....2

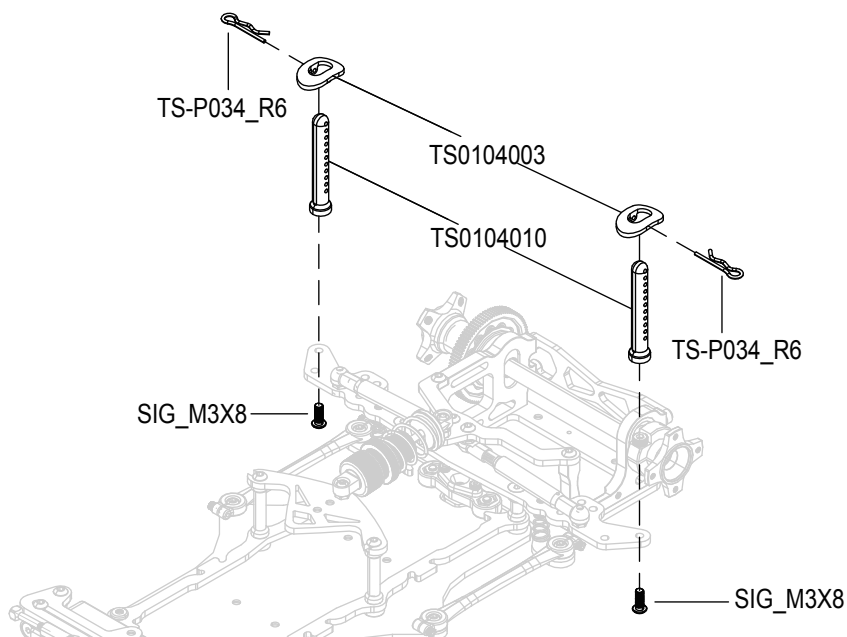


TS0104010 .....2



SIG\_M3X8 .....2

**35**



FR2-5ZZ .....4

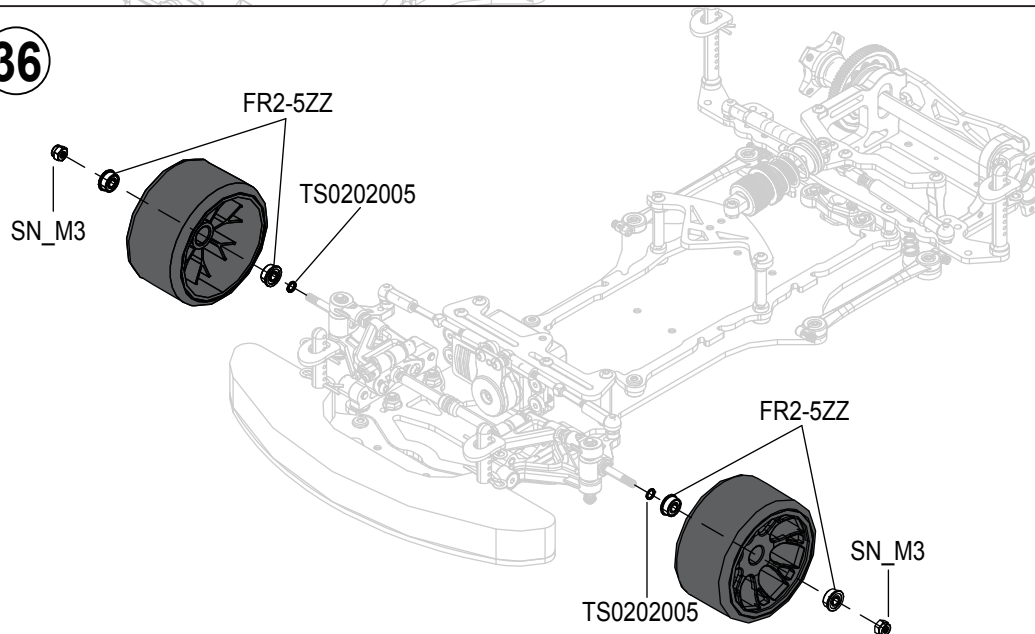


SN\_M3 .....2



TS0202005 .....2

**36**







SG\_M3X8 .....8

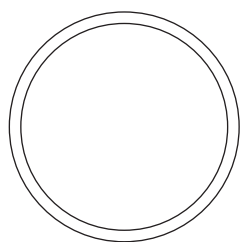
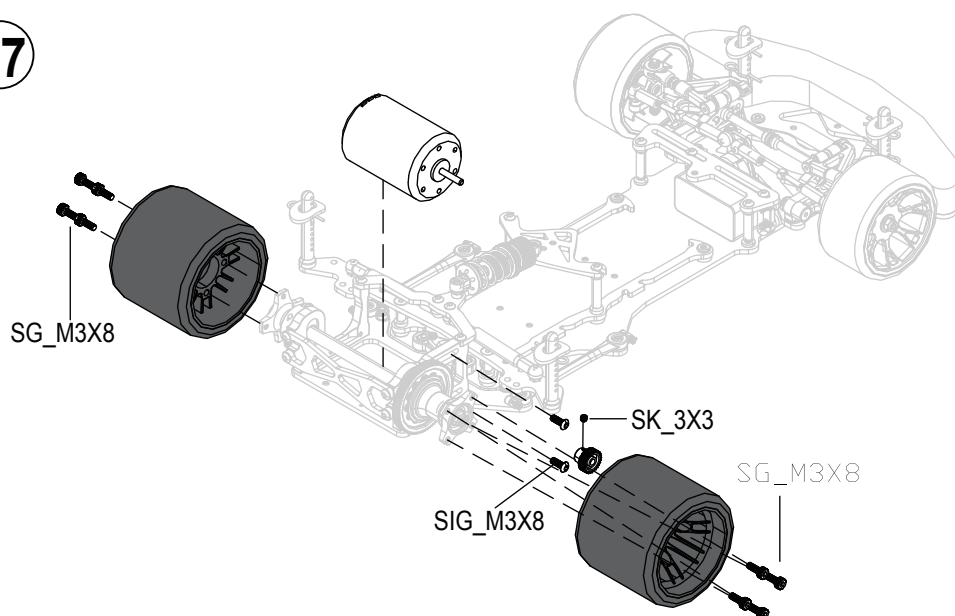


SK\_3X3 .....1



SIG\_M3X8 .....2

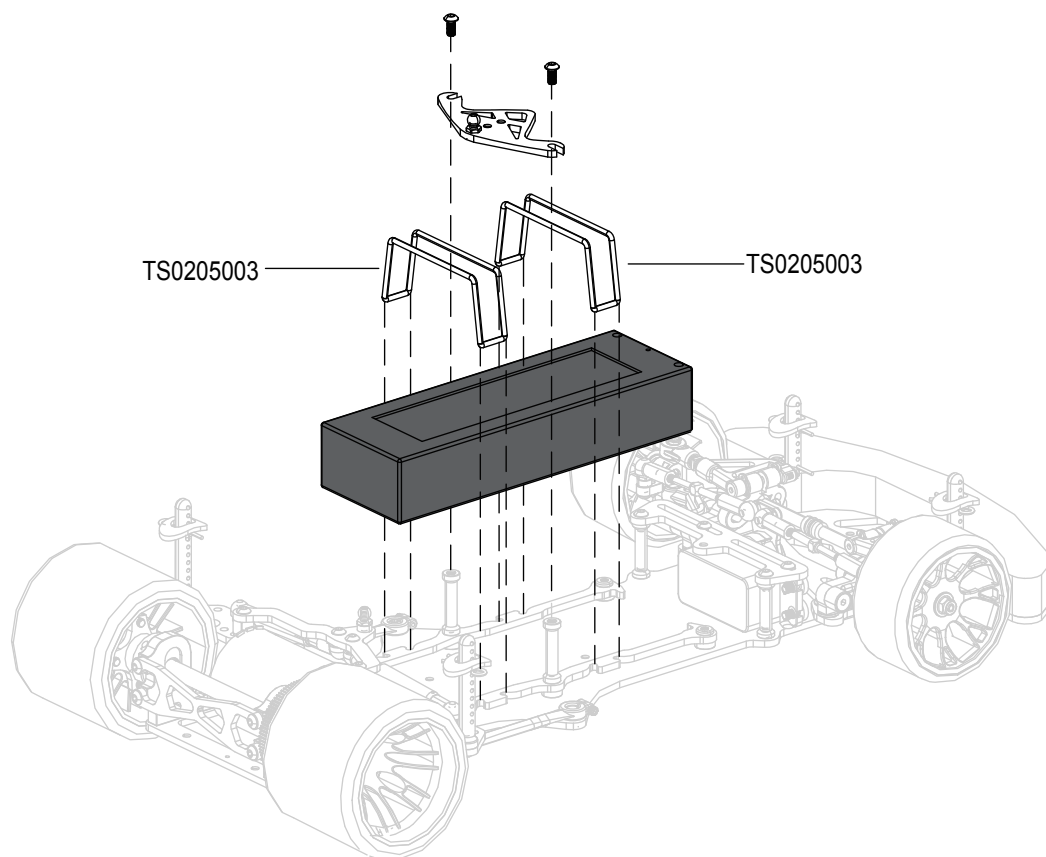
**37**



Ø2.5XØ50  
TS0205003 .....2

**38**

2S Standard battery assemble as below

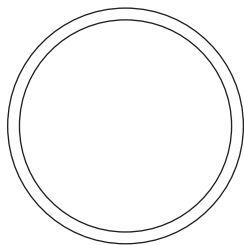




TS0101053.....1



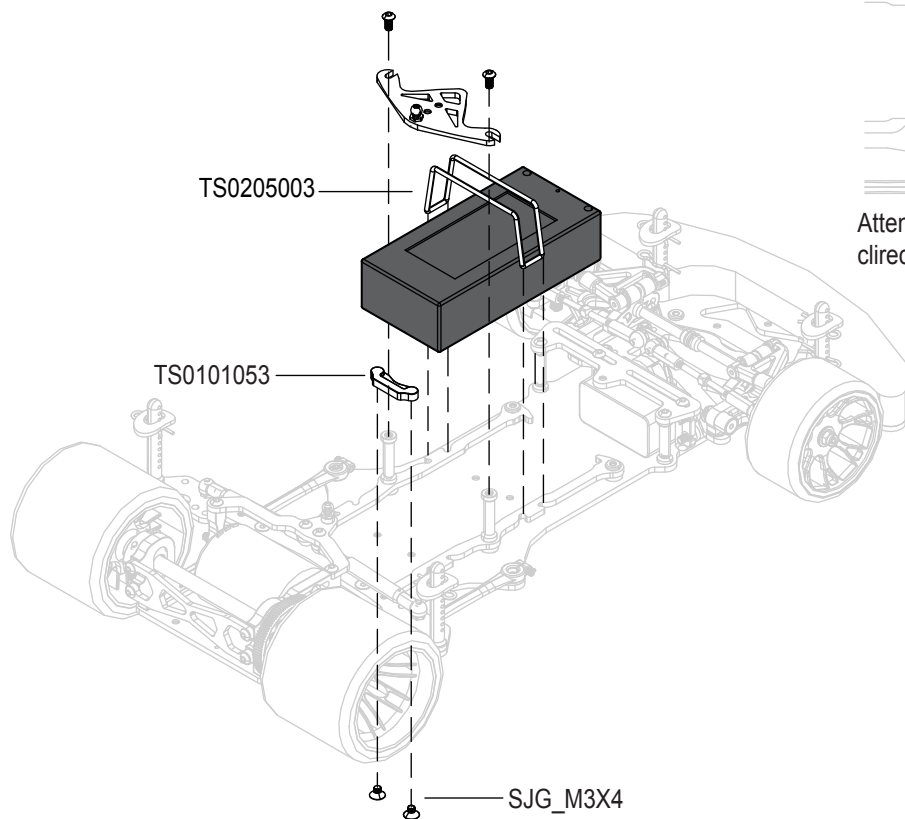
SJG\_M3X4.....2



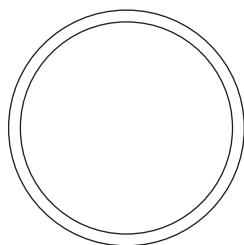
Ø2.5XØ50  
TS0205003.....1

**39**

2S Short battery assemble in front position



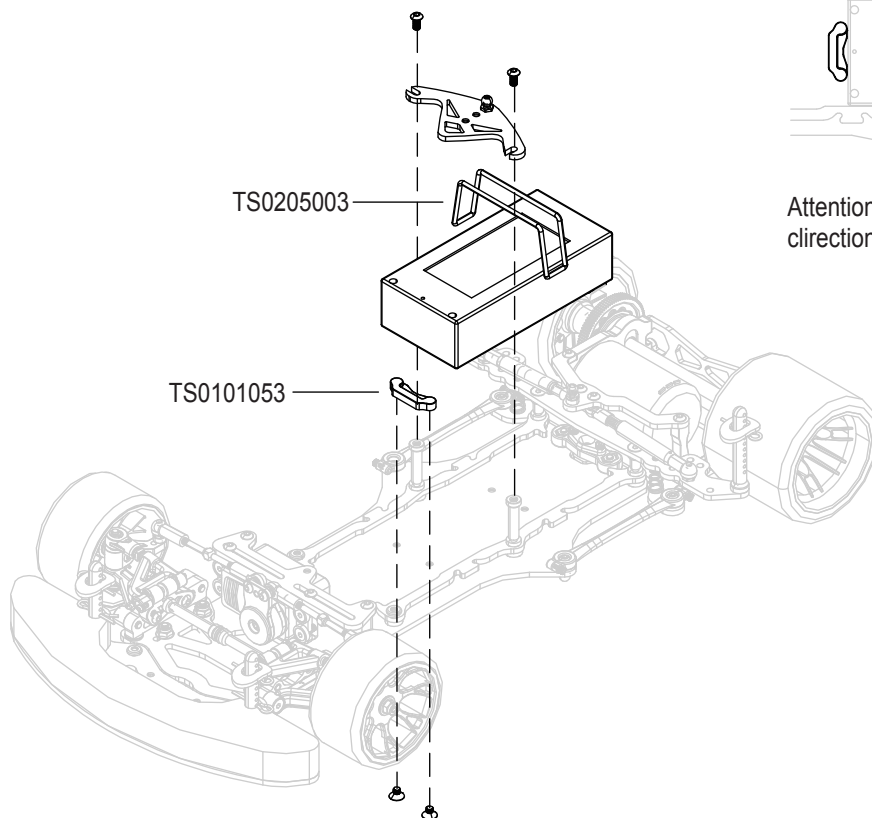
TS0101053 .....1



Ø2.5XØ50  
TS0205003 .....1

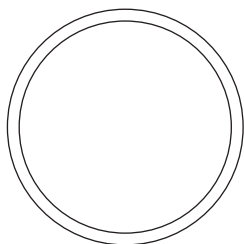
**40**

2S Short battery assemble in front position





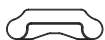
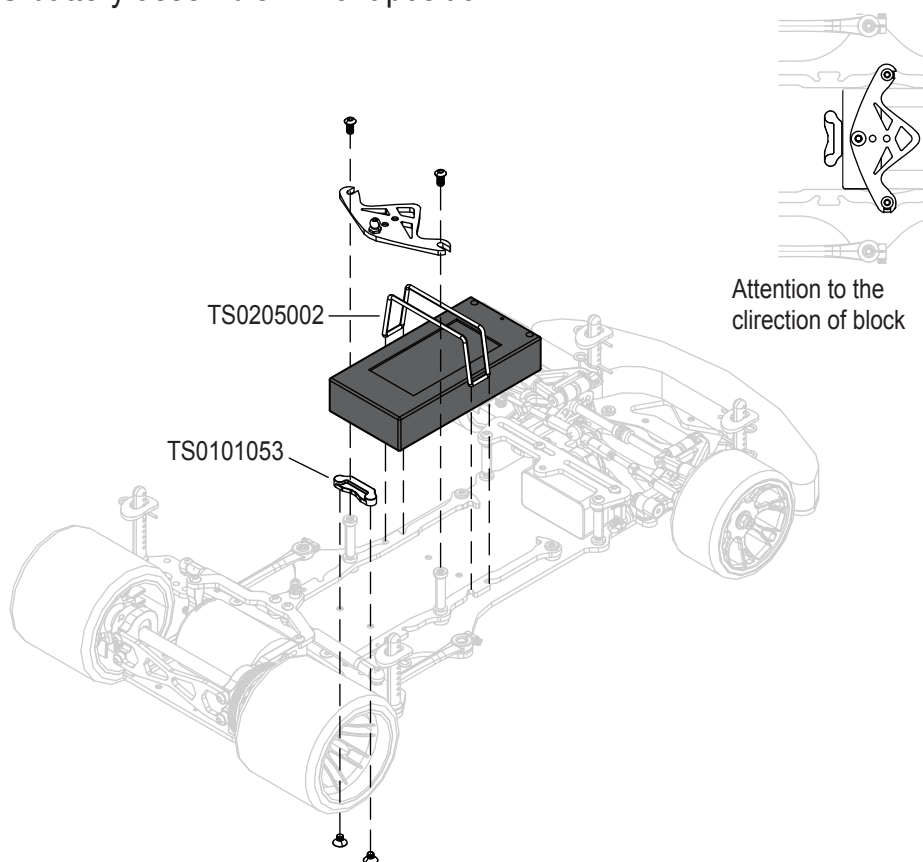
TS0101053 .....1



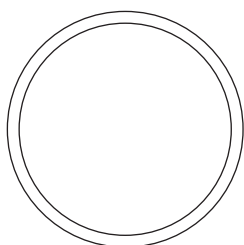
Ø2.5XØ50  
TS0205002 .....1

**41**

## 1S battery assemble in front position

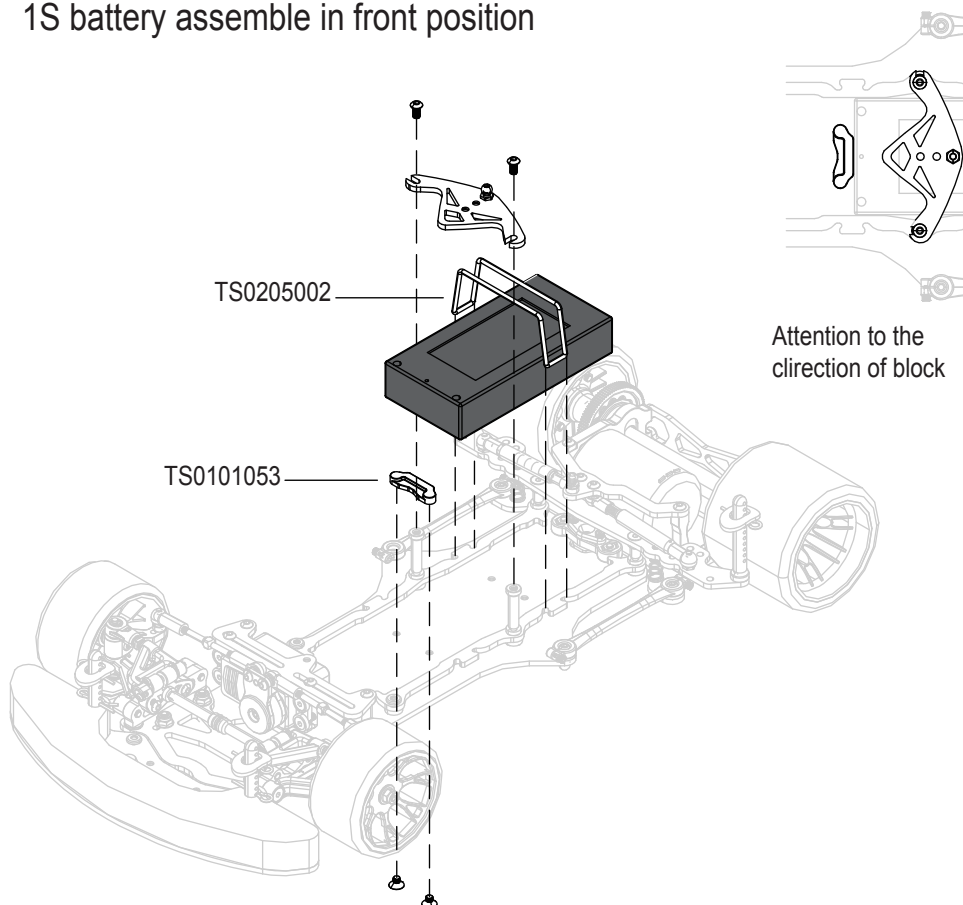


TS0101053 .....1



Ø2.5XØ44  
TS0205002 .....1

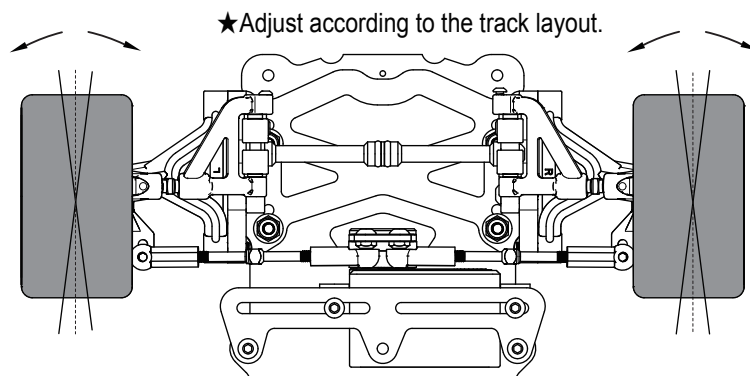
## 1S battery assemble in front position



# SETTING - UP

- Record various running conditions and settings on the setting sheet on page 16.

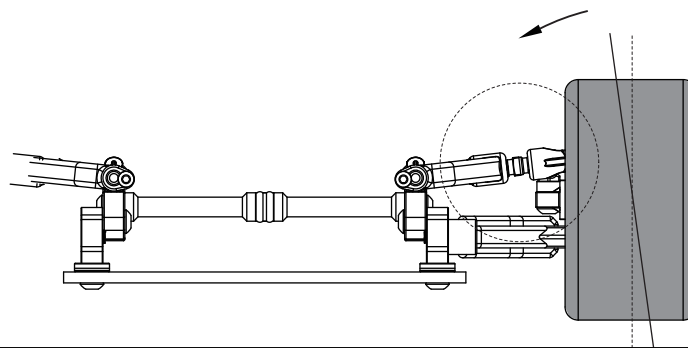
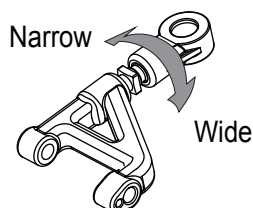
## TOE-IN AND TOE-OUT



## CAMBER ANGLE

Camber angle

- ★ Adapt for the draw bar to adjust camber angle.



## GROUND CLEARANCE

Front

- ★ Ways for adjusting the turnbuckle to fit the hardness of the front suspension



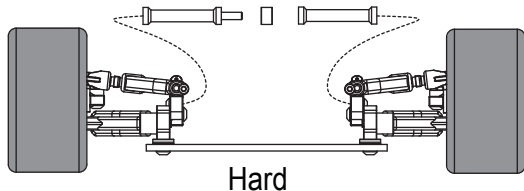
TS0105003



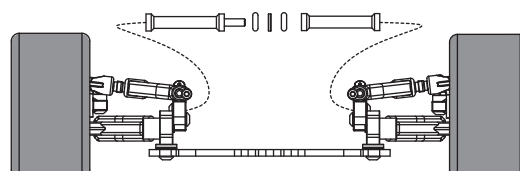
TS0201024



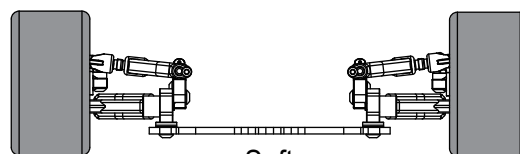
TS0201023



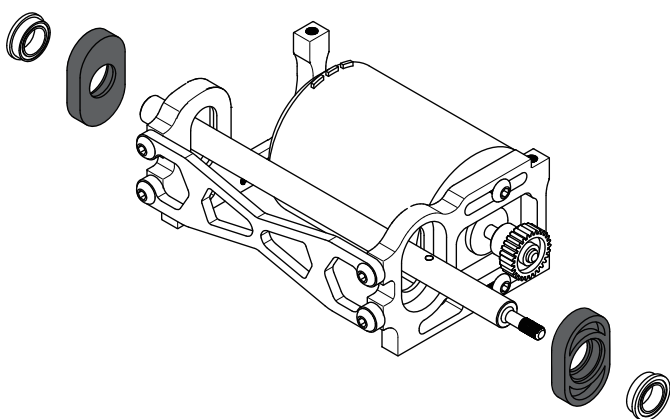
Hard



Medium



Soft



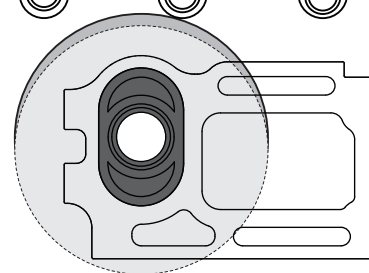
TS0104045 TS0104046 TS0104047 TS0104048 TS0104049



TS0104050 TS0104051 TS0104052 TS0104053 TS0104054



- ★ Use spacers of the same offset for the right and left, and make sure the shaft is horizontal.



**NOTE:**

VA PON INDUSTRIAL CO.,LTD

<http://www.saxoracing.com>

E-mail:saxo@saxoracing.com

1F.NO.1,Ln,122,Chelutou St.Sanchong Dist,New Taipei City 241Taiwan 24157



TS0208030  
Ver 1.0

